

SHARED OWNERSHIP HOME IN HESSLE AVAILABLE NOW

FOR SALE

Plot 18 £163,125

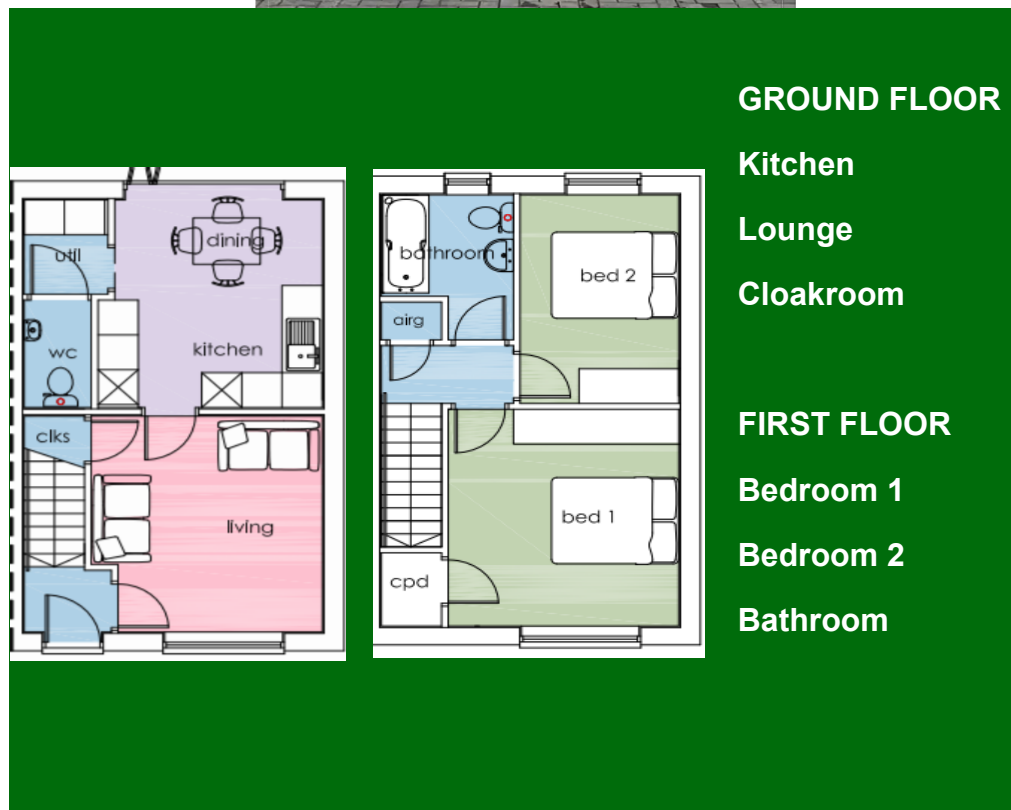
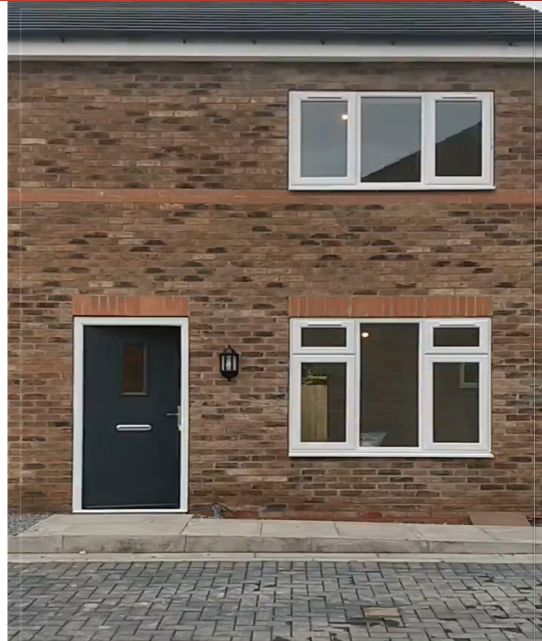
The ground floor of this beautiful two bedroom home includes an open plan kitchen and dining area with patio doors out to the rear garden.

There is a comfortable lounge at the front of the property.

The ground floor also benefits from a utility area and cloakroom and under stairs storage.

Two double bedrooms are upstairs as well as a family bathroom.

The property also comes with allocated parking.



*For more information about how
you can reserve this home email*

info@hullchurcheshousing.org.uk

or call 01482 210842



Hull Churches Housing Association Ltd.